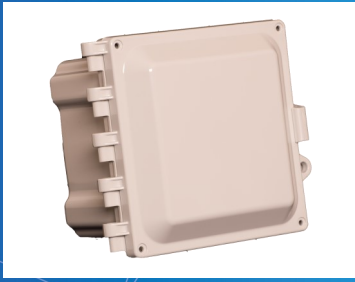




## 6X6X4 POLYCARBONATE ENCLOSURE WITH SOLID DOOR, KEY LOCK AND CORD GRIP



The AccelTex Solutions polycarbonate enclosure protects any enterprise-class AP from environmental threats and tampering. Purpose built for enterprise applications, this aesthetically pleasing enclosure is inconspicuous in an indoor application and durable enough to provide NEMA 6P protection in an outdoor environment.

Part Number: ATS-664P-S-K-CG-BBP



### MECHANICAL SPECIFICATIONS

Size: 6" H x 6" W x 4" D (154.2 mm H x 154.2 mm W x 101.6 mm D)  
Weight: 2.5 lbs (1.13 kg)  
Color: Light Grey  
Material: Polycarbonate  
Door Type: Solid  
Lock Type: Key Lock Plus Latch with Integrated Pad Lockable Hasp  
Antenna Connection Holes: 0  
Hole Size: None  
Cord Grip: Yes  
Equipment Installation: Blank Backplate  
Enclosure Installation: Mounting Feet



### ENVIRONMENTAL SPECIFICATIONS

Installation Environment: Indoor/Outdoor  
Environmental Protection: NEMA 6P, 4X, 4, 3R, 122; IP68  
Operating Temperature: -20 to 240°F (-28 to 115°C)

### WARRANTY



2 Year Limited Warranty